



CRUISE THE COAST

SOPHISTICATION MEETS ADVENTURE



THE SUNCAMPER SAXBY & SOVEREIGN

**Uncompromising Comfort – Built for the Journey
Meet the New Saxby & Sovereign**

The Saxby and Sovereign embody Suncamper's commitment to quality, space, and adventure. Designed for those who crave both comfort and capability, these motorhomes offer generous living areas without compromising on agility. Whether you're cruising the highways or setting up in a remote paradise, they provide a seamless blend of luxury and practicality. Built for explorers who demand more from the journey.



WHY US?

For nearly half a century, Suncamper has been crafting recreational vehicles with one unwavering goal: delivering quality that provides freedom and the ultimate lifestyle.

Proudly Australian-owned and operated, we specialize in building motorhomes designed to thrive in Australia’s diverse and demanding conditions. From initial concept to final creation, every Suncamper embodies decades of expertise from some of the industry’s most respected innovators.

Using time-tested techniques and backed by rigorous industry certifications, every Suncamper motorhome meets the highest standards—delivering exceptional value, durability, and resale appeal. That’s what makes a Suncamper truly a Suncamper. The Saxby and Sovereign continue this legacy, offering spacious luxury without sacrificing practicality. Whether for a weekend getaway or a cross-country adventure, they provide the perfect balance of comfort and capability. Built with premium craftsmanship and smart design, they’re ready for wherever the road takes you.

AWARD-WINNING QUALITY BACKED BY RVMAP

As a multi-award-winning manufacturer, Suncamper is committed to quality, innovation, and excellence. Our accreditation with the Recreational Vehicle Manufacturing Accreditation Program (RVMAP), the regulating sector of the Caravan Industry Association of Australia (CIAA) ensures our motorhomes meet strict industry standards, with regular inspections by CIAA professionals and engineers.

An RVMAP-accredited motorhome isn’t just built better—it holds greater industry value, its safer & adheres to compliances, increased resale potential, and added peace of mind. With Suncamper, you’re choosing proven craftsmanship, superior safety, and a motorhome designed for the long haul.



STRENGTH & ULTIMATE COMFORT: SUNCAMPER ADVANTAGE

Suncamper motorhomes are built with premium composite panels, featuring one-piece roof, walls, and floor for superior strength and durability. Each panel is CNC-cut and precision-fitted like a jigsaw puzzle, creating a seamless structure with no leaks and no opportunities for weak points. This advanced construction method ensures full insulation, keeping you comfortable in any climate. With our innovative, one-piece roof design, Suncamper delivers a stronger, more reliable motorhome built for adventure.

RELAXATION & FLEXIBLE SLEEP SOLUTIONS

Every Suncamper Sovereign and Saxby motorhome offers a range of thoughtfully designed bed options, including queen, drop-down, and French beds—none of which impede on the spacious living area, with the option to add a nose cone bed for extra sleeping capacity. Each model also features a fully equipped bathroom with a separate shower and toilet, providing the comfort and privacy of home on the road. Designed for both convenience and relaxation, these motorhomes ensure a seamless blend of functionality and luxury, making every journey feel effortless.

SUNCAMPER DEALERS: ADVENTURE STARTS HERE!

Suncamper's dealership network spans NSW, Queensland, Victoria, Western Australia, the ACT, South Australia and New Zealand, providing expert support wherever you travel. Our trusted dealers offer personalized service, expert advice, and after-sales care to ensure a seamless motorhome experience. With decades of experience, we make owning, upgrading, and maintaining your Suncamper stress-free. Wherever your journey takes you, our reliable network is there to keep you moving. Visit a dealership today and start your next adventure with confidence!



CUSTOMISABLE FOR YOU: TAILOR YOUR SUNCAMPER

Suncamper motorhomes are designed to be equipped with everything you need for your adventures, from a well-appointed kitchen to comfortable sleeping arrangements. However, we understand that everyone's travel style and needs are unique. That's why we offer a wide range of accessories that allow you to customise your motorhome to suit your personal preferences and budget. Whether you want to enhance your comfort, add off-grid capabilities, or upgrade your storage, the possibilities are endless. Plus, with our comprehensive colour range, you can personalise the interior to match your style. With Suncamper, you get the flexibility to make your motorhome truly your own while enjoying everything you need right from the start.



SAXBY V-2

EUROPEAN CLASS WITH A DROP DOWN BED

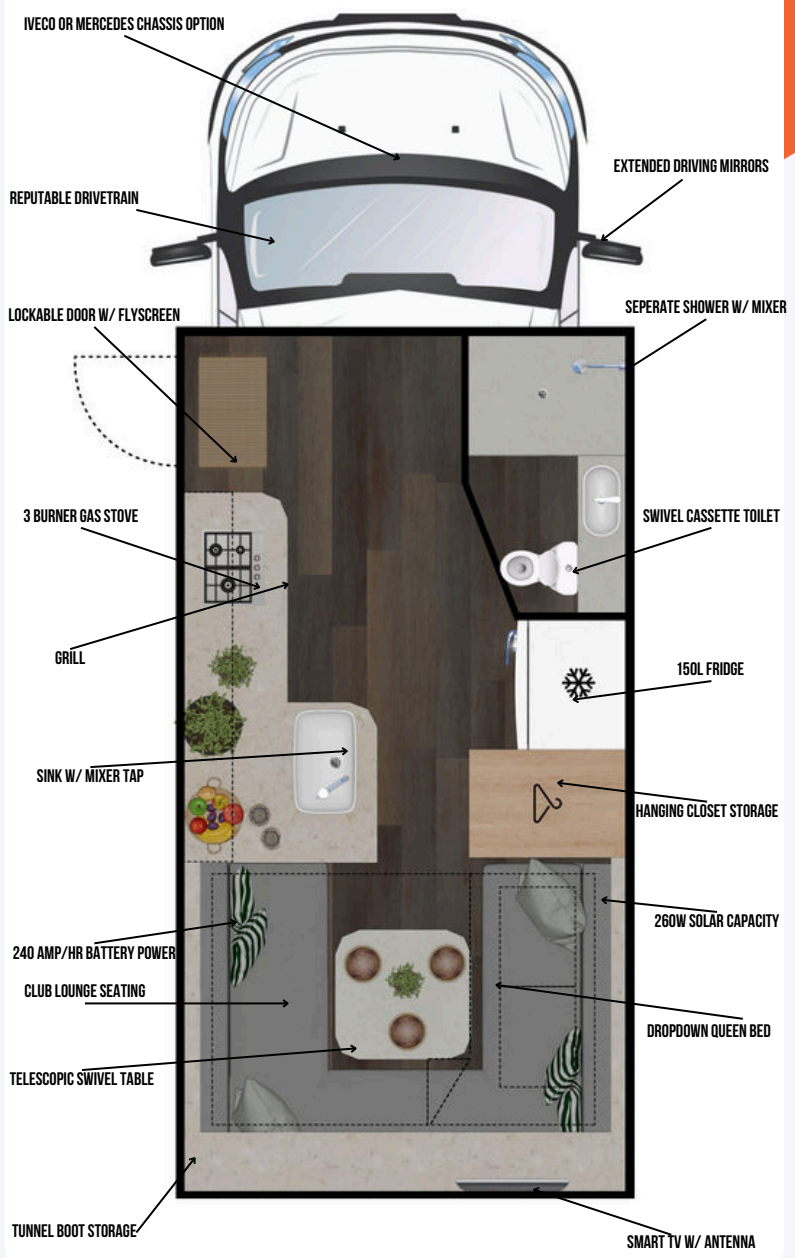
The Saxby V-2 sets the standard for luxury in motorhomes, combining innovative design, top-tier finishes, and advanced technology. Crafted for those who desire the finest travel experience, the V-2 offers unrivaled comfort and performance across any landscape.

Built on your choice of the Iveco Daily or Mercedes-Benz Sprinter chassis, the Saxby V-2 handles both urban roads and rugged terrain with ease. Inside, a spacious, intelligently designed layout includes a drop-down queen bed for ultimate comfort and a club lounge below for relaxation. The motorhome also features a well-appointed kitchen, a luxurious bathroom with a separate shower and toilet, and a tunnel boot for gear and equipment.

Large panoramic windows fill the interior with natural light and offer breathtaking views wherever you are. Whether exploring coastlines, mountains, or cityscapes, the Saxby V-2 delivers an exceptional experience at every turn. For those who demand performance and sophistication, the Saxby V-2 is the perfect choice—offering luxury, versatility, and quality in every detail. Indulge in comfort and style—experience the V-2.



HEIGHT: 3.1M
WIDTH: 2.35M
LENGTH: 6.8M
BERTH: 2+2
DRIVE: 4X2
CAR LICENSE



SAXBY X-2

A CLASSIC, PRACTICAL, AND TIMELESS MOTORHOME LAYOUT

The Saxby X-2 redefines luxury touring with an open, spacious layout that maximises comfort and functionality. Designed for those who appreciate elegance and style, the X-2 blends innovative design with premium features for an exceptional motorhome experience.

Built on your choice of Iveco Daily or Mercedes-Benz Sprinter chassis, the Saxby X-2 offers outstanding performance and durability. Its thoughtfully designed interior feels incredibly open, featuring a cozy French bed and bay windows that flood the living space with natural light and stunning views.

Swivel seats at the front provide flexible seating, while the permanent dining area is perfect for meals, relaxation, or socialising. The motorhome also includes a well-equipped kitchen and a luxurious bathroom with a separate shower and toilet.

For storage, the Saxby X-2 offers a large compartment to keep your gear and essentials neatly stowed. Its open layout ensures you never feel cramped, making it the ideal choice for those seeking both luxury and practicality on their travels. Experience unmatched comfort, space, and style with the Saxby X-2.

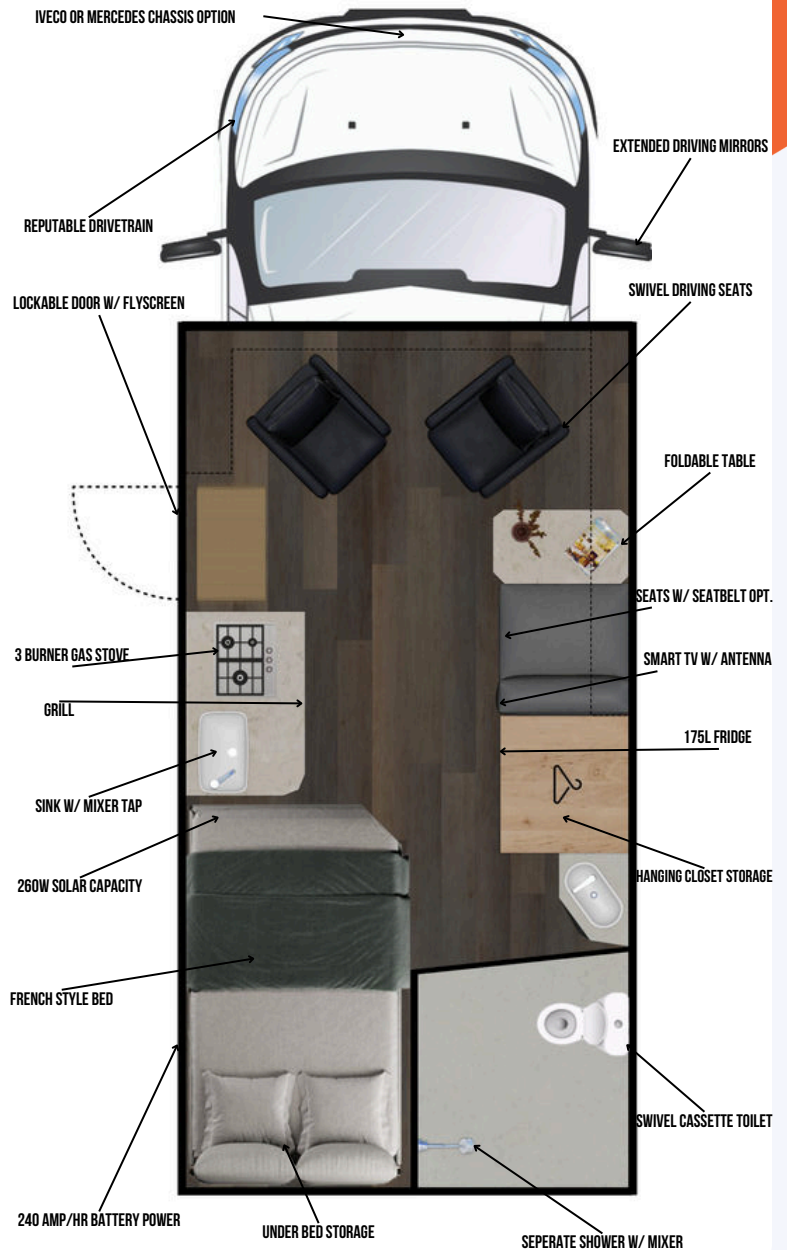


Additional Accessories Pictured

HEIGHT: 3.1M
WIDTH: 2.35M

LENGTH: 6.8M
BERTH: 2

DRIVE: 4X2
CAR LICENSE



SOVEREIGN Q-2

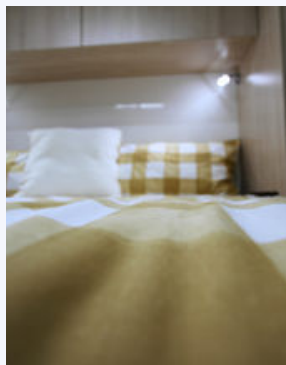
TOURING LUXURY WITH A ISLAND BED

The Sovereign Q-2 is the pinnacle of luxury and innovation, designed for those who demand the best in style and performance. Whether for a weekend escape or full-time living, it offers everything needed for a premium travel experience.

Built on your choice of Iveco Daily or Mercedes-Benz Sprinter chassis, the Sovereign Q-2 delivers outstanding performance and durability. Its open-plan layout creates a spacious interior with high-end finishes, while the queen-size island bed ensures ultimate comfort. Swivel seats add versatility, providing extra seating when parked.

Designed for full-time living, the Sovereign Q-2 feels like home wherever you go. The set dining area is perfect for meals, while the fully equipped kitchen allows for gourmet cooking on the road. A premium bathroom with a separate shower and toilet, plus upgraded electrics, ensures extended off-grid capability.

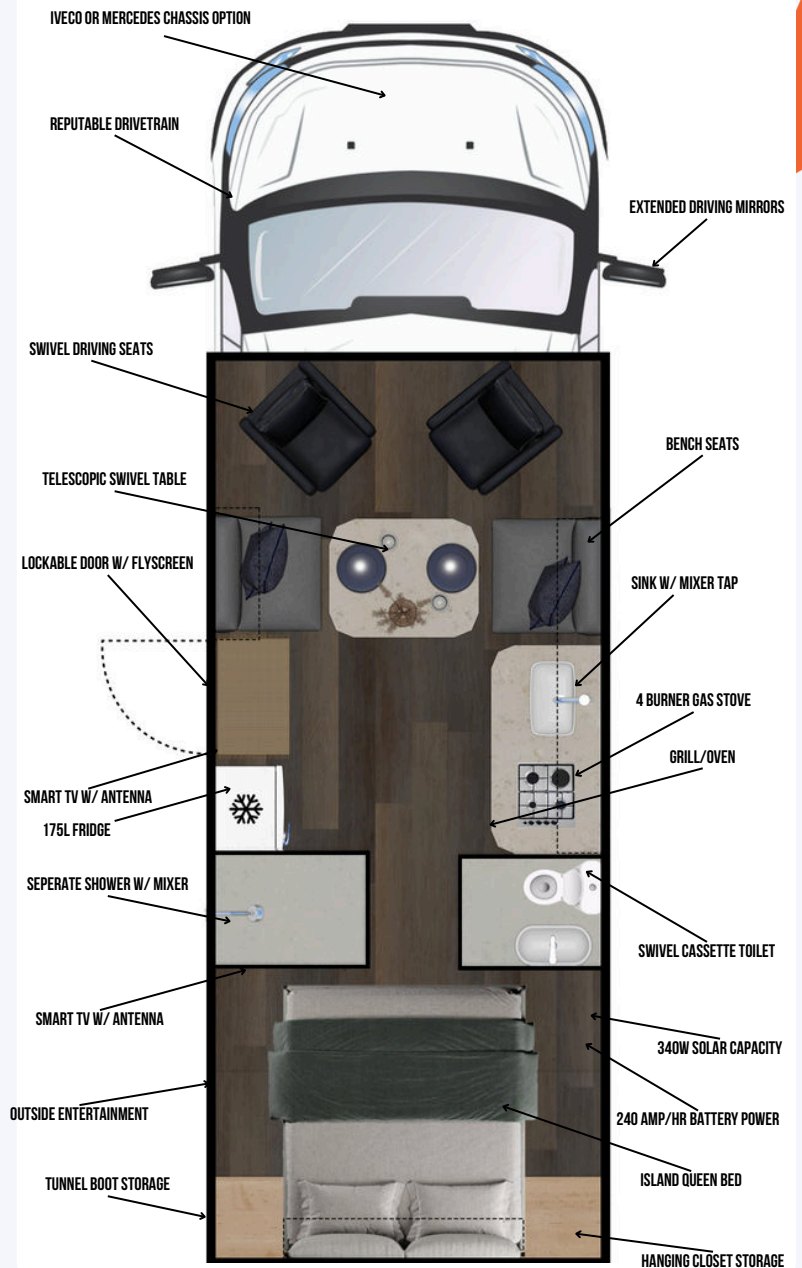
Outdoor living is just as refined, featuring an external BBQ and entertainment area for warm evenings. A washing machine adds convenience for long-term travel. Large picture windows bring in natural light, while ample storage keeps essentials organised, ensuring you're always ready for the next adventure. Experience unmatched comfort, space, and style with the Sovereign Q-2.



HEIGHT: 3.35M
WIDTH: 2.35M

LENGTH: 7.8M
BERTH: 2

DRIVE: 4X2
CAR LICENSE



SOVEREIGN P-2

ADAPTABLE GRANDEUR TO TAKE VISITORS

The Sovereign P-2 is designed for families who want to enjoy the journey without sacrificing comfort or luxury. Whether exploring the great outdoors or enjoying a relaxing getaway, it offers the perfect combination of space, versatility, and high-end features for everyone to enjoy.

Built on your choice of Iveco Daily or Mercedes-Benz Sprinter chassis, the P-2 delivers outstanding performance and durability. Its spacious interior features versatile sleeping arrangements that comfortably accommodate up to six people, including a permanent master bed and additional sleeping areas for family flexibility.

The P-2 is equipped with a set dining area, ideal for family meals, and a fully equipped kitchen to make cooking on the road easy. A luxurious bathroom with a separate shower and toilet ensures complete convenience during longer trips.

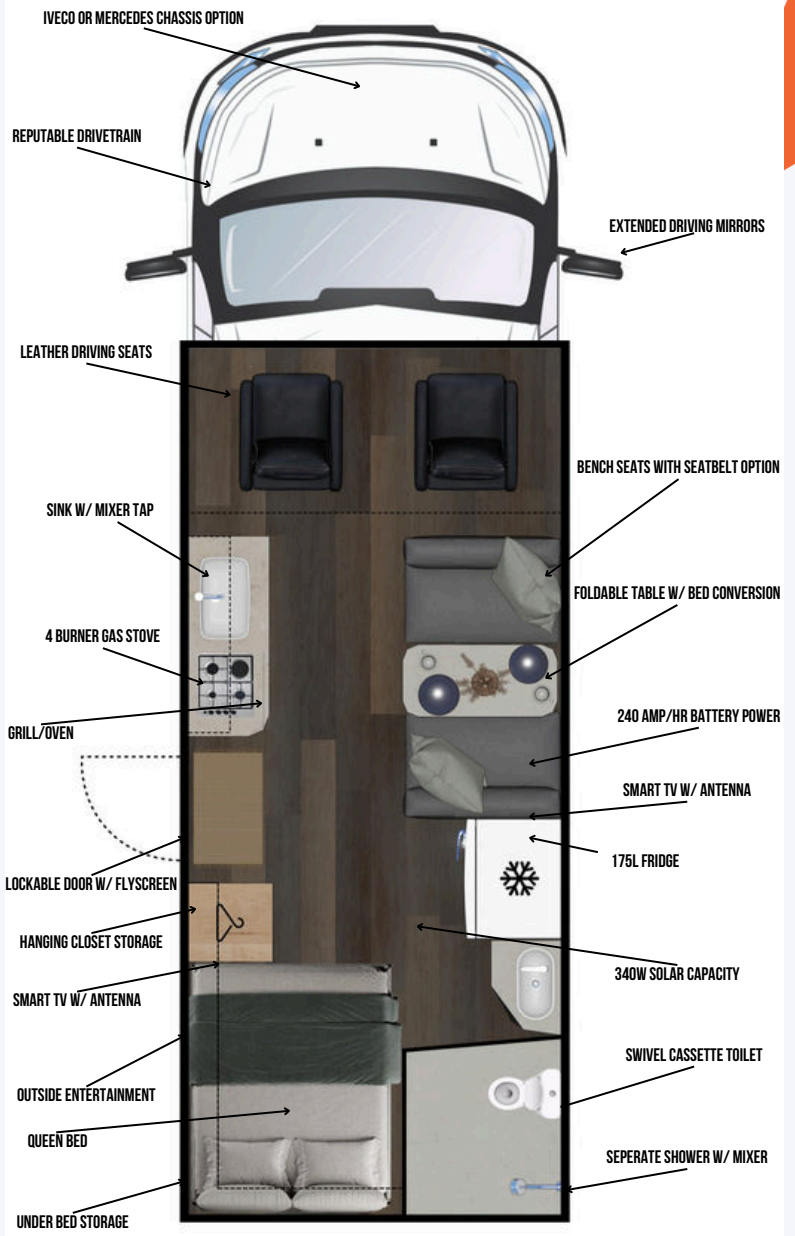
With ample storage for all your gear, the P-2 is the ultimate family motorhome. Whether on a weekend getaway or a long-term road trip, it ensures everyone has the space and comfort to enjoy the journey. The Sovereign P-2 – perfect for unforgettable family adventures.



HEIGHT: 3.35M
WIDTH: 2.35M

LENGTH: 7.8M
BERTH: 2

DRIVE: 4X2
CAR LICENSE



STANDARD FEATURES

LEGEND: y = Yes/Included - = Not Included o = Option

EXTERIOR	V-2	X-2	Q-2	P-2
One Piece Roof & Walls	y	y	y	y
Fully Composite Construction	y	y	y	y
No Frame-Work	y	y	y	y
Aerodynamic Fibreglass Rear Moulds	y	y	y	y
Insulated Walls	y	y	y	y
Insulated Floor	y	y	y	y
Insulated Composite NoseCone	y	y	y	y
Twice Sealed Hatches & Windows	y	y	y	y
Single Electric Step w/ Grab Handle	y	y	-	-
Dual Electric Step w/ Grab Handle	-	-	y	y
4m Awning	y	y	-	-
5m Electric Awning	-	-	y	y
Outside Awning Light x1	y	y	-	-
Outside Awning Light x2	-	-	y	y
No Set Up TV Aerial	y	y	y	y
Reverse Camera	y	y	-	-
Dual Reverse Camera	o	o	y	y
External to Internal Storage Lockers	y	y	y	y
Dometic Separating Crimsafe Door	y	y	y	y
2x 4kg Gas Bottle	y	y	y	y
Electrical Utility Hatch	-	y	y	y
240v Inlet	y	y	y	y
Mains Pressure Inlet	y	y	y	y
Water Tank Tap Inlet	y	y	y	y
260w Solar	y	y	-	-
340w Solar	-	-	y	y
Single Large Overhead Skylight	y	y	-	-
Dual Large Overhead Skylights	-	-	y	y
Large Storage Tunnel Boot	y	-	y	-
Under Bed External to Internal Storage Locker	-	y	-	y
External Shower	o	o	y	y
Outside TV	-	-	y	y
Slide Out BBQ, Sink & Kitchen	-	-	y	y
External Speakers	o	o	y	y
Gas Bayonet	o	o	y	y
12v Power in Access Hatch	o	o	y	y
LED Light to Illuminate Storage Boot	y	o	y	y



V-2



X-2



Sovereign Q-2



Sovereign P-2

INTERIOR	V-2	X-2	Q-2	P-2
Fibreglass Interior Walls	y	y	y	y
Marine Grade Ply Cabinetry	y	y	y	y
Double Glazed UV Protection Windows	y	y	y	y
Retractable Flyscreen	y	y	y	y
Blockout Blinds	y	y	y	y
Queen Bed	y	-	y	-
North South Bed	o	y	y	y
French Bed (Corner Bed Queen Length)	-	y	-	y
Island Bed	-	-	y	-
Electric Drop Down Bed	y	-	-	-
Walkthrough Cab Access	y	y	y	y
Swivel Seats	-	y	y	-
NoseCone Overhead Storage Cupboards	y	y	y	y
Sirocco Fan in Lounge	o	o	y	y
Laminated Benchtop w/ Edging	y	y	-	-
Stone Benchtop	-	-	y	y
Superior Graded Upholstery	y	y	-	-
Premium Leather	o	o	y	y
Overhead Storages	y	y	y	y
Dedicated Hanging Storage Cupboard	y	y	y	y
Cafe Style Seating	-	y	y	-
Club Lounge Seating w/ Bed Conversion & Additional Storage	y	-	-	-
Full Dinette Area	-	-	-	y
Rear Panoramic Windows	y	-	-	-
Large Picture Windows	-	y	y	y
Smart TV	y	y	y	y
Recessed Warm LED Lighting	y	y	y	y
Switched LED Lights	y	y	y	y

BATHROOM	V-2	X-2	Q-2	P-2
Permanent Mounted Shower Head	y	y	y	y
Hot & Cold Water Mixer	y	y	y	y
Recessed Basin	y	y	-	-
Ceramic Basin	-	-	y	y
Vanity Mirror	y	y	y	y
Storage Cabinet	y	y	y	y
Clothes Line/Aerator	y	y	y	y
Thetford Cassette Toilet	y	y	y	y
Extraction Fan & Vent	y	y	y	y
Privacy Door	y	y	y	y
Separate Shower Toilet	y	y	y	y
Separation Door for Living & Bed Quarters	-	-	y	-
Lipped Shower Drain for Water Retention	y	y	y	y

ELECTRICS + UTILITES	V-2	X-2	Q-2	P-2
240 Amp Hr AGM Batteries	y	y	-	-
240 Amp Hr Lithium Batteries	o	o	y	y
Victron Battery Monitoring Shunt	y	y	y	y
260w Solar	y	y	-	-
340w Solar	o	o	y	y
Victron MPPT Solar Controller	y	y	y	y
Victron DC - DC Charger	y	y	y	y
240v Battery Charger 30amp	y	y	-	-
240v Battery Charger 80amp	-	-	y	y
Pure Sine Inverter	o	o	y	y
240v Reverse Cycle Air Conditioner	y	y	y	y
130L Fresh Water	y	y	-	-
172L Fresh Water	-	-	y	y
86L Grey Water	y	y	y	y
Dedicated Fresh & Grey Water Monitoring	y	y	y	y
Gas/Electric Hot Water System	y	y	y	y
Diesel Heater	o	o	y	y
Low Consumption LED Lighting	y	y	y	y
Sirocco Fan	o	o	y	y
12v PowerPoints	y	y	y	y
12v USB Charging	y	y	y	y
12v USB Charging in Bed Area	y	y	y	y
240v PowerPoints	y	y	y	y
Mains (Town) Water Inlet	y	y	y	y
Outside TV & Entertainment	-	-	y	y
Outside BBQ/Kitchen	-	-	y	y
Washing Machine	-	-	y	y

KITCHEN	V-2	X-2	Q-2	P-2
Thetford 3 Burner Gas Stove	y	y	-	-
Thetford 4 Burner Gas Stove	-	-	y	y
Thetford Combo Grill/Oven	y	y	-	-
Thetford Separate Grill/Oven	-	-	y	y
Rangehood & Lights	-	y	y	y
150L Thetford 12v Compressor Fridge	y	y	-	-
174L Thetford 12v Compressor Fridge	-	-	y	y
Slide Out Pantry	y	y	y	y
Cutlery Draw	y	y	y	y
Kitchen Overheads	y	y	y	y
Large Below Bench Draws	y	y	y	y
Full Size Pots & Pans Storage	y	y	y	y
Stainless Steel Sink w/ Glass Lid	y	y	-	-
Ceramic Coated Sink w/ Glass Lid & Drying Rack	-	-	y	y
Tap w/ Hot & Cold Mixer	y	y	y	y
Choice of Laminated Benchtop	y	y	-	-
Choice of Stone Benchtop	-	-	y	y
Microwave	y	y	y	y
Water Filter	o	o	y	y

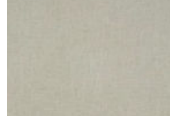
VEHICLE	MECO DAILY	MERCEDES BENZ SPRINTER
V-2	y	y
X-2	y	y
Q-2	y	y
P-2	y	y
3.0 Turbo Diesel (132kW & 180hp)	y	-
2.0 Turbo Diesel (140kW & 190hp)	-	y
8 Speed Gearbox	y	-
9 Speed Gearbox	-	y
4 Cylinder	y	y
4490kg GVM	y	y
Advanced Safety Features (For Example - Lane Departure, Adaptive Cruise, etc...)	y	y
Front (Cab) Air Conditioning	y	y
Apple Carplay/ Android Auto	y	y
AM/FM/Digital Radio	y	y
Modern Car Driving Experience	y	y
Dual Rear Wheels	y	y
Rear Wheel Drive Chassis	y	y
Reverse Camera	y	y
Adblue Tank	y	y
Large Touchscreen Display/ Steering Wheel Controls	y	y

COLOUR RANGE

FABRIC (SEATS)



JAKE
SEAFOAM



JAKE
PEARL



OPTIMA
POLAR



OPTIMA
ASH



JAKE
GREY



JAKE
GRAPHITE

LEATHER (PREMIUM SEATS)



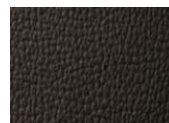
AMBASSADOR
ORION



AMBASSADOR
BISCOTTO



BISON



AMBASSADOR
MOUSSE



AMBASSADOR
ARGENT



AMBASSADOR
BLACK

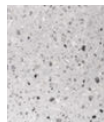
BENCHTOP (LAMINATE)



WHITE DIAMOND
QUARTZ



PIETRA
BIANCA



TERRAZO
GRIGO



MILANO
MARRONE



TREVISO
BLACK

STONE (BENCHTOPS)



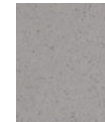
ASPEN LILY



LIMPO



ASPEN ALDER

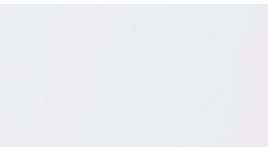


SANDED GOOSE

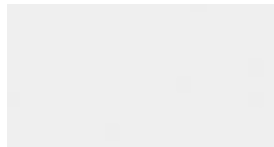


SANDED TUNDRA

OVER HEADS (DOORS)



GLOSS WHITE



WHITE MATT



FINTE PELLE



FLUTED FINTE PELLE

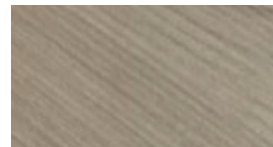
TIMBER (CABINETS)



BRUSHED OAK CREAM



TUSCAN OAK



LARIX



BRUSHED OAK GREY

FLOOR



VICTORIA LIGHT



CAJOU HONEY



CAJOU GREY

WHAT OUR CLIENTS SAY



We bought our camper a few years ago and it was the most seamless process dealing with Michael and the team at Suncamper being so remote we had a lot of faith and trust in the team and were not let down.

I love the idea of the knowledge the team has to guide with extras that we took on board and added to our unit and after travelling around Australia for 2 1/2 years permanently living in our motorhome and towing our tinny it was the time of our lives and not possible without this exceptional piece of equipment thanks to the whole entire team at Suncamper couldn't do it without you and can't wait to do it again.

BOMBER FARRELL - Internet Personality

I originally had a Sherwood 4 wheel drive with lots of accessories added, but after travelling for a few years.

I realised I needed more comfort so the Sherwood was traded in and I bought the 2023 Saxby V2 model which is 2 wheel drive, a bit bigger and more comfort for me. I have to say I haven't looked back.

Suncamper Thornleigh is like one big family, friendly and dedicated in all aspects of service, from the pre sales to the after sales service and everyone else behind the scenes to be exceptional.

JAN COOKE - Sydney

We purchased our Suncamper to give us the freedom and flexibility to explore some more remote areas of Australia. Going off-grid with well-chosen upgrades like extra battery and water storage gives us peace of mind.

Even though it's rugged, we also love the cosy, comfortable and compact interior of the motorhome. The thoughtful design and placement of everything works well for us. The panoramic windows are fantastic, and we've found them great for bird and wildlife watching.

Connor kept us in the loop with the build, and he answered all of our questions quickly. The Suncamper team is dedicated to providing great customer service and follow up support if required. We're looking forward to the next adventure!

**RICK & LIZ
- Sydney**

My dealings with Suncamper go back around 8 years. My wife and myself went to the Caravan & Camping Show in Sydney. We wandered around looking for motorhomes for hours comparing models, accessories and inclusions. We checked out Suncamper's Sherwood models. The cost and layout was perfect for us. We actually spoke to the owner's Keith and Cameron Harrison. They explained the build process and history of the company. This is a rare find, they weren't just a Salesperson.

Obviously we bought it and loved it. When we retired, we again spoke to Cameron and with his assistance we actually designed our new Saxby Motorhome. When our new unit was delivered we certainly weren't disappointed.

If you are looking for a Motorhome where each one is individually built and not mass produced check out their factory.

We love our Motorhome.

**GRANT & CHRIS
TAYLOR - Sydney**





YOUR CLOSEST DEALER IS:

CONTACT US

T. 1300 416 854

E. sales@suncampermotorhomes.com.au

Visit Us

9 Sefton Road
Thornleigh NSW 2120

MD19015

A division of Suncamper Pty Ltd



WWW.SUNCAMPERMOTORHOMES.COM.AU