



# CONQUER THE OUTBACK

## UNLEASH YOUR ADVENTURE



Image Courtesy of Brian McMahon

## THE SUNCAMPER SHERWOOD

**An Australian Icon - Spacious, Agile & Adventure-Ready. Meet the New Sherwood.**

The Sherwood is the essence of Suncamper - compact, capable, and adventure-ready. Whether navigating city streets or exploring the open countryside, it fits in a single car space yet delivers full-sized comfort for the journey ahead. Available in 2WD or 4x4, it's your ultimate escape vehicle, built for wherever the road, or trail takes you.



Image Courtesy of The Scaife's

# WHY US?

**For nearly half a century, Suncamper has been crafting recreational vehicles with one unwavering goal: delivering quality that provides freedom and the ultimate lifestyle.**

Proudly Australian-owned and operated, we specialize in building motorhomes designed to thrive in Australia's diverse and demanding conditions. From initial concept to final creation, every Suncamper embodies decades of expertise from some of the industry's most respected innovators.

Using time-tested techniques and backed by rigorous industry and engineering certifications, every Suncamper is built to the highest standards. The result? Exceptional value, unmatched durability, and strong resale appeal. That's what makes a Suncamper truly a Suncamper. The Sherwood is the essence of Suncamper - compact, capable, and adventure-ready. Whether navigating city streets or exploring the open countryside, it fits in a single car space yet delivers full-sized comfort for the journey ahead. Available in 2WD or 4x4, it's your ultimate escape vehicle, built for wherever the road, or trail takes you.

## AWARD-WINNING QUALITY BACKED BY RVMAP

As a multi-award-winning manufacturer, Suncamper is committed to quality, innovation, and excellence. Our accreditation with the Recreational Vehicle Manufacturing Accreditation Program (RVMAP), the regulating sector of the Caravan Industry Association of Australia (CIAA) ensures our motorhomes meet strict industry standards, with regular inspections by CIAA professionals and engineers.

An RVMAP-accredited motorhome isn't just built better—it holds greater industry value, its safer & adheres to compliances, increased resale potential, and added peace of mind. With Suncamper, you're choosing proven craftsmanship, superior safety, and a motorhome designed for the long haul.



# STRENGTH & ULTIMATE COMFORT: SUNCAMPER ADVANTAGE

Suncamper motorhomes are built with premium composite panels, featuring one-piece roof, walls, and floor for superior strength and durability. Each panel is CNC-cut and precision-fitted like a jigsaw puzzle, creating a seamless structure with no leaks and no opportunities for weak points. This advanced construction method ensures full insulation, keeping you comfortable in any climate. With our innovative, one-piece roof design, Suncamper delivers a stronger, more reliable motorhome built for adventure.

# RELAXATION & FLEXIBLE SLEEP SOLUTIONS

Every Suncamper motorhome features a fully insulated composite nose cone, enhancing strength, comfort, durability, and climate control. Inside, you'll find a queen-width bed for ultimate comfort, ensuring a great night's sleep. Depending on the floorplan, there are versatile bed configurations, including north-south options or secondary bed conversions to suit your needs. Designed for maximum comfort and flexibility, Suncamper motorhomes provide the perfect space to relax—wherever the road takes you.

# SUNCAMPER DEALERS: ADVENTURE STARTS HERE!

Suncamper's dealership network spans NSW, Queensland, Victoria, Western Australia, the ACT, South Australia and New Zealand, providing expert support wherever you travel. Our trusted dealers offer personalized service, expert advice, and after-sales care to ensure a seamless motorhome experience. With decades of experience, we make owning, upgrading, and maintaining your Suncamper stress-free. Wherever your journey takes you, our reliable network is there to keep you moving. Visit a dealership today and start your next adventure with confidence!



# CUSTOMISABLE FOR YOU: TAILOR YOUR SUNCAMPER

Suncamper motorhomes are designed to be equipped with everything you need for your adventures, from a well-appointed kitchen to comfortable sleeping arrangements. However, we understand that everyone's travel style and needs are unique. That's why we offer a wide range of accessories that allow you to customise your motorhome to suit your personal preferences and budget. Whether you want to enhance your comfort, add off-grid capabilities, or upgrade your storage, the possibilities are endless. Plus, with our comprehensive colour range, you can personalise the interior to match your style. With Suncamper, you get the flexibility to make your motorhome truly your own while enjoying everything you need right from the start.



# SHERWOOD R-2

## EQUIPPED WITH BASICS READY TO GO

The Sherwood R-2 is the ideal entry-level motorhome, offering a compact, practical layout for those eager to explore the open road without the premium price tag. Built on either a Toyota Hilux 4x2 or Ford Ranger chassis, the R-2 delivers the reliability and capability you need for highway cruising and national park entries, while also able to get you to your favourite wineries.

Inside, the R-2 features a queen-width bed, a fully equipped kitchen, and a combo shower and toilet, providing all the essentials for self-sufficient travel. Large windows flood the interior with natural light, creating a bright, airy space that enhances your travel experience.

While the R-2 may not have all the luxury touches of higher-end models, it offers the core features for comfortable, affordable travel, with the option to add the upgrades you want or need, making it the perfect choice for solos, couples or small families looking to embrace the motorhome lifestyle without compromise.

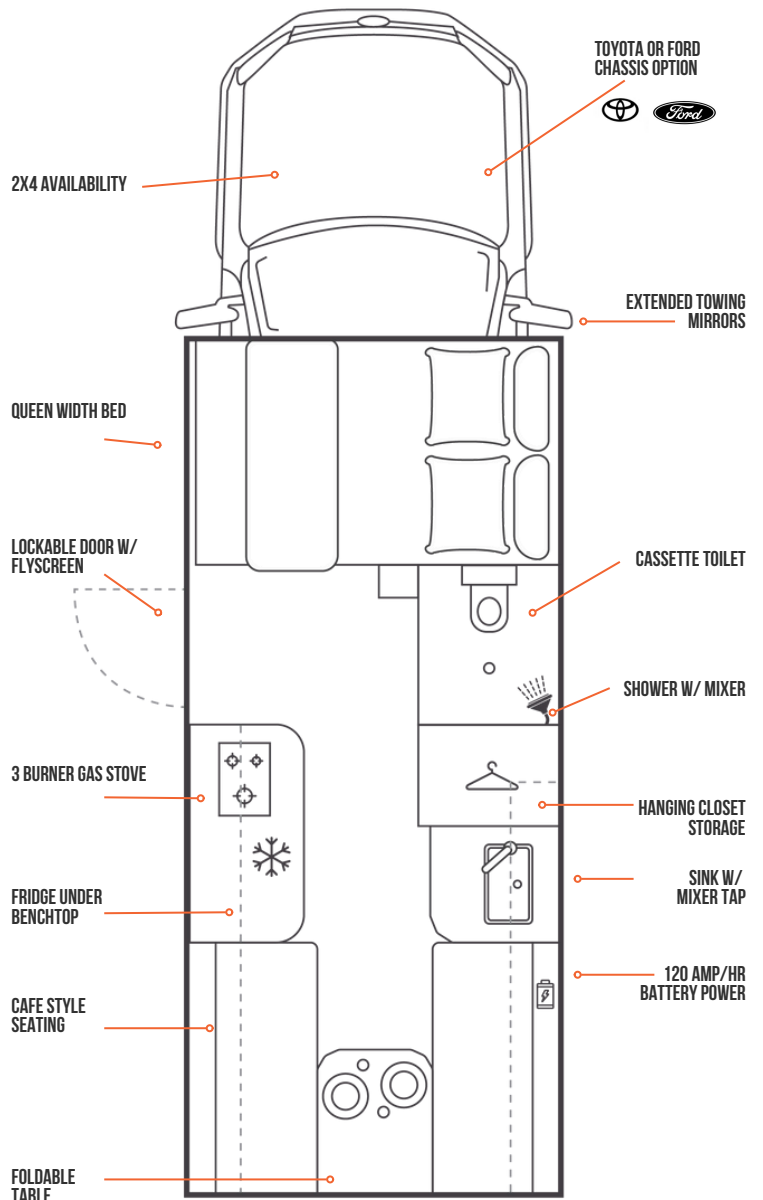
Compact, functional, and adventure-ready - the Sherwood R-2 is the perfect motorhome for those starting their journey. With an attractive price point and all the essentials, you need, it is built to get you on the road with confidence.



HEIGHT: 3M  
WIDTH: 2.1M

LENGTH: 5.8M  
BERTH: 2+2

DRIVE: 4X2  
CAR LICENSE



# SHERWOOD E-2

## ORIGINALITY REIMAGINED

The Sherwood E-2 is the original Sherwood design, a time-tested floorplan that continues to set the standard for compact motorhome travel. Built for adventure, it balances practicality, comfort, and durability, making it an excellent choice for solos, couples or families seeking new experiences on the road.

Designed to go where you go, the E-2 is available on a Toyota Hilux or Ford Ranger, in both 4x4 or 4x2 chassis, giving you the flexibility to choose the right setup for your journey—whether it is off-road exploration or a coastal getaway. Despite its compact footprint, the E-2 offers a spacious and functional interior, featuring a queen-width bed, a fully equipped kitchen, a combo shower and toilet, and panoramic windows that provide incredible views, natural light, and airflow.

While perfect for one or two, it can comfortably sleep four, making it ideal for families or those wanting extra space for guests. Its smart, efficient design ensures you can travel further, stay longer, and enjoy every moment on the road.

Compact, capable, and adventure-ready—the Sherwood E-2 is a refined model, updated with modern comforts while staying true to its core principles.

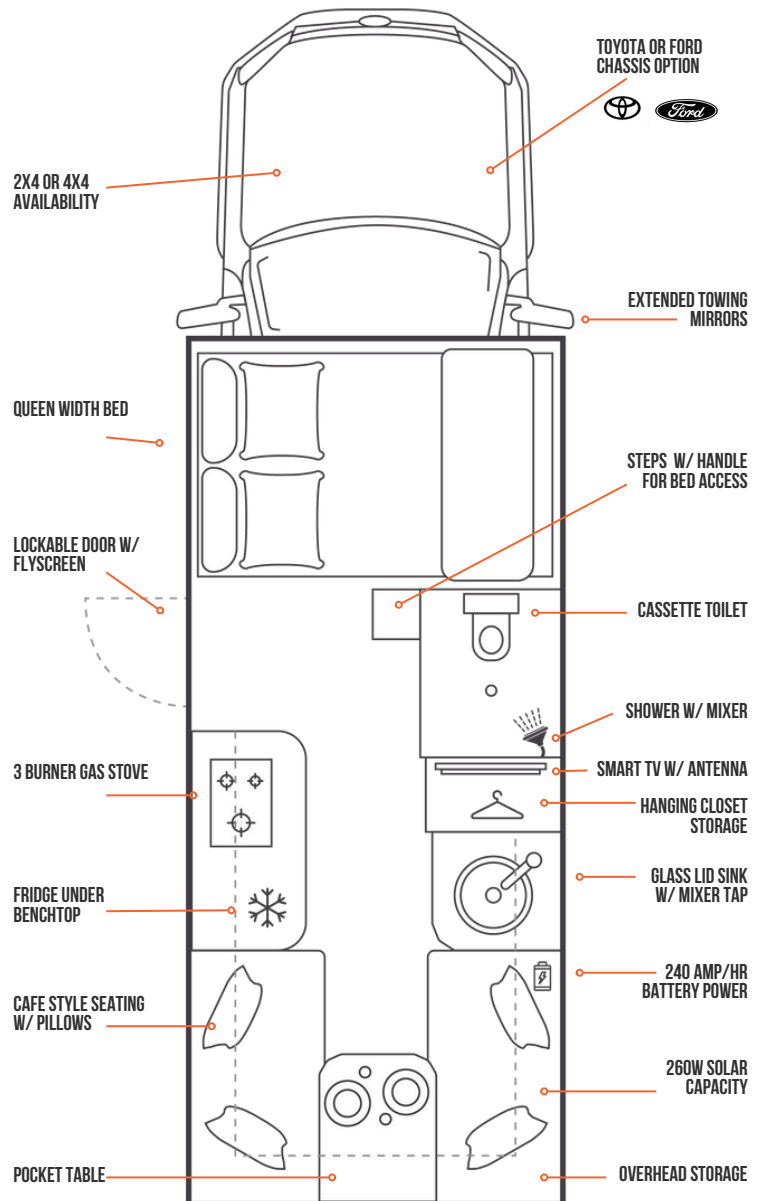


Additional Accessories Pictured\* Image Courtesy of Bomber & Kell Farrell

HEIGHT: 3.25M  
WIDTH: 2.1M

LENGTH: 5.8M  
BERTH: 2+2

DRIVE: 4X2 & 4X4  
CAR LICENSE



# SHERWOOD T-2

## TWIN BEDS - SEPARATE SHOWER TOILET

The Sherwood T-2 is a purpose-built motorhome designed exclusively for one or two adventurers, offering the ideal blend of comfort, practicality, and adventure-ready capability. The T-2 delivers a well-thought-out layout and robust design for all your travel needs.

Available on the Toyota Hilux or Ford Ranger, in 4x4 or 4x2 chassis, the T-2 is engineered to handle both highway cruising and off-road adventures with ease. Inside, you will find a bed adaptable to your needs, with both singles, north south, and an east west configuration available, in addition to a long kitchen bench offering generous workspace, and a separate shower and toilet for added comfort. The T-2 also features two large transom windows, providing ample natural light, excellent airflow, and breathtaking views, without sacrificing insulation or functionality.

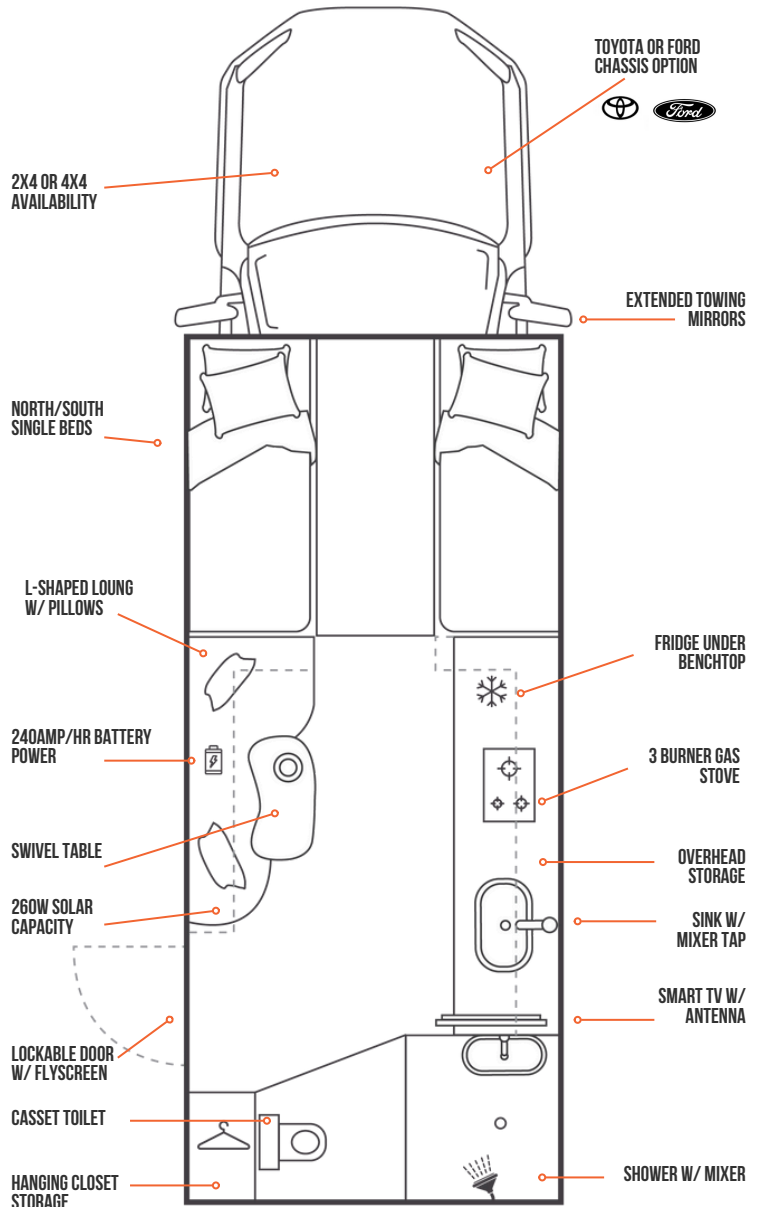
Whether you are venturing into the outback or exploring coastal highways, the Sherwood T-2 is the perfect companion for those seeking a compact, efficient motorhome with all the comforts of home.

Compact, capable, and adventure-ready - the Sherwood T-2 is built for those eager to explore Australia while enjoying the comfort of a separate shower and toilet, plus a spacious north-south bed.



Additional Accessories Pictured\*

**HEIGHT: 3.25M**  
**WIDTH: 2.1M**  
**LENGTH: 5.8M**  
**BERTH: 2**  
**DRIVE: 4X2 & 4X4**  
**CAR LICENSE**



# SHERWOOD CONQUEROR 2.0

## THE COMPLETE 4X4 MOTORHOME

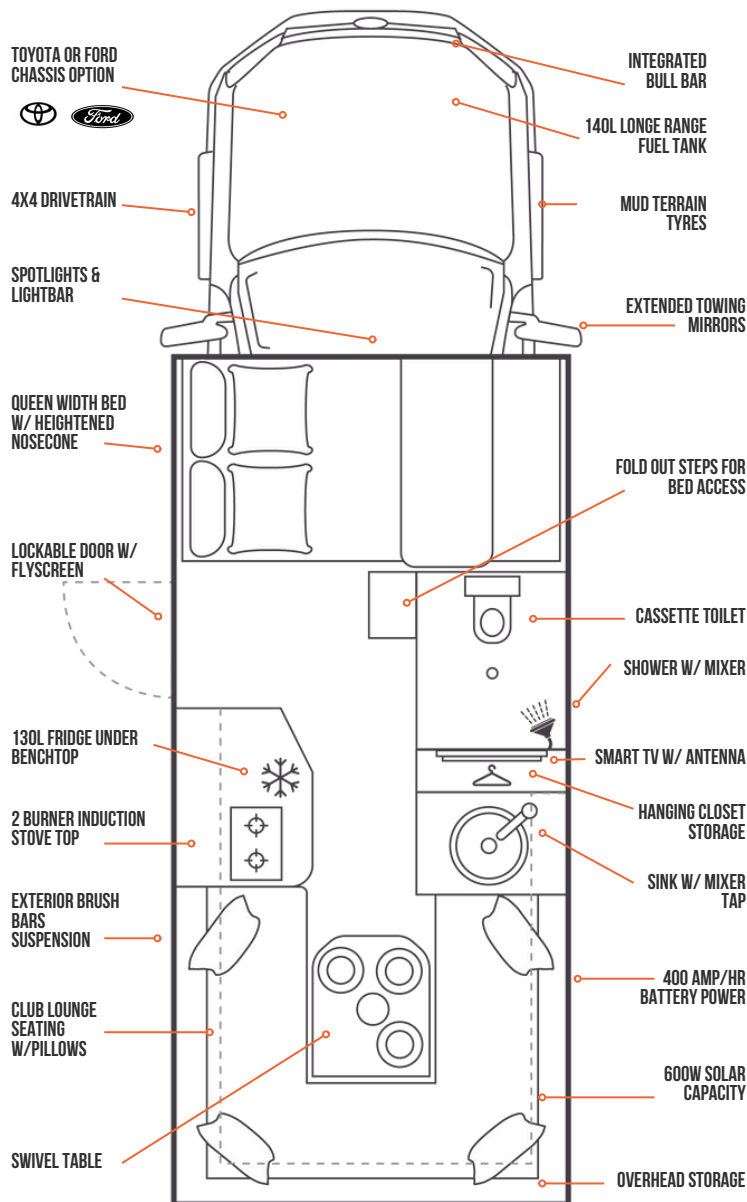
The Conqueror 2.0 is the ultimate off-road motorhome, combining rugged performance and luxurious comfort for those who seek adventure without compromise. Equipped with a fully electric off-grid system, it's completely gas-free, ensuring self-sufficiency as you explore Australia's most remote destinations. A high-capacity battery and solar panels power the entire motorhome, keeping systems running smoothly, even off-grid.

The larger nose cone enhances its bold, commanding look while providing more space for the queen-width bed, giving you a comfortable place to rest after a day of off-road exploration. Inside, the Conqueror 2.0 boasts top-of-the-range finishes and premium accessories, elevating your travel experience. With a well-equipped kitchen, combo shower and toilet, and ample storage, this motorhome delivers luxury on the road, no matter the terrain.

Large windows bring in natural light, creating a spacious, airy atmosphere. Whether tackling rugged outback tracks or enjoying a coastal retreat, the Conqueror 2.0 blends off-road capability with premium living. Built for adventure and designed for comfort, it's the ultimate Sherwood motorhome—ready for off-grid and off-road living. With a redesigned construction that stays true to its roots, it lets you travel further and stay longer.



**HEIGHT: 3.25M**      **LENGTH: 5.85M**      **DRIVE: 4X4**  
**WIDTH: 2.1M**      **BERTH: 2+2**      **CAR LICENSE**



# STANDARD FEATURES

LEGEND: y = Yes/Included - = Not Included o = Option

EXTERIOR	R-2	E-2	T-2	CONQUEROR 2.0
One Piece Roof & Walls	y	y	y	y
Fully Composite Construction	y	y	y	y
No Frame-Work	y	y	y	-
Aluminium Frame	-	-	-	y
Insulated Walls	y	y	y	y
Insulated Floor	y	y	y	-
Insulated Composite Nose Cone	y	y	y	y
Twice Sealed Hatches & Windows	y	y	y	y
Manual Step w/ Grab Handle	y	-	-	-
Electric Step w/ Grab Handle	o	y	y	y
3m Awning	o	y	y	-
3.5m Awning	-	-	-	y
Outside Awning Light x1	y	y	y	-
Surrounding External Lights	-	-	-	y
No Set Up TV Aerial	o	y	y	y
Reverse Camera	o	y	y	-
Dual Reverse Camera	o	o	o	y
External to Internal Storage Lockers	o	y	y	y
Dometic Separating Crimsafe Door	y	y	y	y
1x 4kg Gas Bottle	y	-	-	-
2x 4kg Gas Bottle	o	y	y	-
Electrical Utility Hatch	-	-	-	y
Nose-Cone External Skylight	o	o	o	y
Bathroom Extraction Vent	y	y	y	y
240v Inlet	y	y	y	y
Mains Pressure Inlet	o	y	y	y
Water Tank Tap Inlet	y	y	y	y
Dedicated Drinking Water Tap Inlet	-	-	-	y
Underfloor Storage Hatch	-	-	-	y
Towbar	o	o	o	y
260w Solar	o	y	y	-
600w Solar	-	-	-	y
Bullbar	-	o	o	y
Checkerplate Scrub Protection	-	y	y	-
Raptor Coating Scrub Protection	-	-	-	y
LED Light Bars	-	-	-	y
Brush Bars	-	-	-	y



E-2



R-2



T-2



CONQUEROR 2.0

INTERIOR	R-2	E-2	T-2	CONQUEROR 2.0
Fibreglass Interior Walls	y	y	y	y
Marine Grade Ply Cabinetry	y	y	y	y
Double Glazed UV Protection Windows	y	y	y	y
Retractable Flyscreen	y	y	y	y
Blockout Blinds	y	y	y	y
Queen Width Bed	y	y	y	y
North South Bed	-	-	y	-
Fully Insulated NoseCone	y	y	y	y
Hatch In Nose Cone	o	o	o	y
Sirocco Fan For Bed & Lounge	o	y	y	y
Dual Bed Entry Steps	-	y	y	y
Cab Access from Motorhome	y	y	y	y
Laminted Benchtop w/ T Mould	y	-	-	-
Laminted Benchtop w/ Edging	-	y	y	-
Stone Benchtop	-	-	-	y
Benchspace	y	y	y	y
Superior Graded Upholstery	y	y	y	-
Premium Leather	-	o	o	y
Overhead Storage	y	y	y	y
Dedicated Hanging Storage Cupboard	y	y	y	y
Cafe Style Seating w/ Bed Conversion	y	y	-	y
Club Lounge Seating w/ Bed Conversion & Additional Storage	o	o	-	y
Crescent Lounge w/ Swivel Table	-	-	y	-
Rear Panoramic Windows	y	y	-	y
Large Picture Windows	-	-	y	-
Smart TV	o	y	y	y
Recessed Warm LED Lighting	-	y	y	y
Switched LED Lights	y	y	y	y

BATHROOM	R-2	E-2	T-2	CONQUEROR 2.0
Permanent Mounted Shower Head	y	y	y	y
Hot & Cold Water Mixer	y	y	y	y
Flip Down Basin	-	y	y	y
Vanity Mirror	y	y	y	y
Storage Cabinet	-	-	y	y
Clothes Line/Aerator	o	y	y	y
Thetford Cassette Toilet	y	y	y	y
Extraction Fan & Vent	y	y	y	y
Privacy Door	y	y	y	y
Combo Shower Toilet	y	y	-	y
Separate Shower Toilet	-	-	y	-
Diesel Heating Vented Through to Bathroom	-	-	-	y
Porthole Window	-	-	y	-

ELECTRICS + UTILITES	R-2	E-2	T-2	CONQUEROR 2.0
120 Amp Hr AGM Battery	y	-	-	-
240 Amp Hr AGM Batteries	o	y	y	-
400 Amp Hr Lithium Batteries	-	-	-	y
Victron Battery Monitoring Shunt	y	y	y	y
260w Solar	o	y	y	-
600w Solar	-	-	-	y
Victron MPPT Solar Controller	o	y	y	y
Victron DC - DC Charger	y	y	y	y
240v Battery Charger 30amp	y	y	y	-
240v Battery Charger 120amp	-	-	-	y
Pure Sine Inverter	o	o	o	y
240v Reverse Cycle Air Conditioner	o	y	y	o
86L Fresh Water	y	y	y	-
95L Fresh Water	-	-	-	y
80L Dedicated Drinking Water (175L Total)	-	-	-	y
43L Grey Water	y	y	y	y
Dedicated Fresh & Grey Water Monitoring	y	y	y	y
Gas/Electric Hot Water System	y	y	y	-
Diesel Hot Water	-	-	-	y
Diesel Air Heater	o	o	o	y
Low Consumption LED Lighting	y	y	y	y
Sirocco Fan	o	y	y	y
12v PowerPoints	y	y	y	y
12v USB Charging	y	y	y	y
12v USB Charging in Bed Area	-	y	y	y
240v PowerPoints	y	y	y	y
Mains (Town) Water Inlet	o	y	y	y

KITCHEN	R-2	E-2	T-2	CONQUEROR 2.0
Thetford 3 Burner Gas Stove	y	y	y	-
Induction Cooktop	-	-	-	y
Rangehood & Lights	-	y	y	y
Extended Benchspace	-	-	-	y
105L Thetford 12v Compressor Fridge	y	y	y	-
Vitrifigo 130L 12v Compressor Fridge	-	-	-	y
Slide Out Pantry	-	y	-	-
Cutlery Draw	y	y	y	y
Kitchen Overheads	y	y	y	y
Large Below Bench Storage	y	y	y	y
Stainless Steel Sink	y	-	-	-
Stainless Steel Sink w/ Glass Lid	-	y	y	-
Ceramic Coated Sink w/ Glass Lid & Drying Rack	-	-	-	y
Stainless Steel Tap	y	y	y	-
Matte Black Tap	-	-	-	y
Choice of Laminated Benchtop	y	y	y	-
Choice of Stone Benchtop	-	-	-	y
Microwave	y	y	y	-
Water Filter	o	o	o	y

VEHICLE	HILUX 4X2	RANGER 4X2	HILUX 4X4	RANGER 4X4
R-2	y	y	-	-
E-2	y	y	y	y
T-2	y	y	y	y
Conqueror 2.0	-	-	-	y
6 Speed Auto	y	y	y	-
10 Speed Auto	-	-	-	y
80L Fuel Tank	y	y	y	-
140L Fuel Tank	-	o	o	y
4 Cylinder	y	y	y	y
3180kg GVM Upgrade	y	-	-	-
3500kg GVM Upgrade	-	y	y	y
3620kg GVM Upgrade	-	-	o	-
3650kg GVM Upgrade	-	-	-	o
3800kg GVM Upgrade	-	-	-	o*
Cloth Bucket Seats	y	y	y	y
Front Air Conditioner	y	y	y	y
Apple Carplay/Android Auto	y	y	y	y
AM/FM/ Digital Radio	y	y	y	y
Height Adjustable Drivers Seat	-	y	y	y
Upgraded Towing Mirrors	y	y	y	y

Standard on Conqueror 2.0\*

# COLOUR RANGE

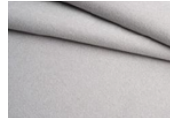
## FABRIC (SEATS)



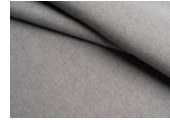
JAKE  
SEAFOAM



JAKE  
PEARL



OPTIMA  
POLAR



OPTIMA  
ASH

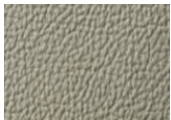


JAKE  
GREY

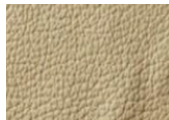


JAKE  
GRAPHITE

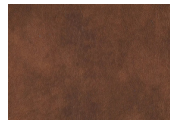
## LEATHER (PREMIUM SEATS)



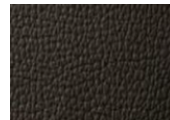
AMBASSADOR  
ORION



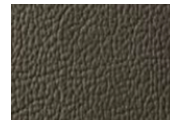
AMBASSADOR  
BISCOTTO



BISON



AMBASSADOR  
MOUSSE



AMBASSADOR  
ARGENT

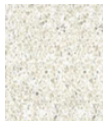


AMBASSADOR  
BLACK

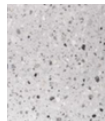
## BENCHTOP (LAMINATE)



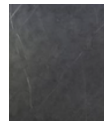
WHITE DIAMOND  
QUARTZ



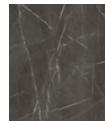
PIETRA  
BIANCA



TERRAZO  
GRIGO

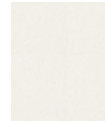


MILANO  
MARRONE

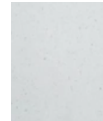


TREVISO  
BLACK

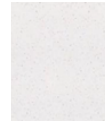
## STONE (BENCHTOPS)



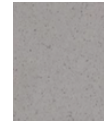
ASPEN LILY



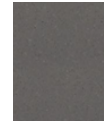
LIMPO



ASPEN ALDER

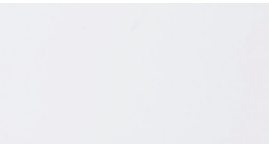


SANDED GOOSE

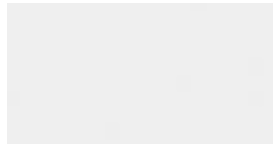


SANDED TUNDRA

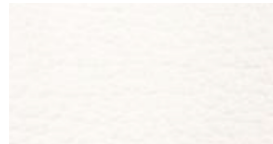
## OVER HEADS (DOORS)



GLOSS WHITE



WHITE MATT

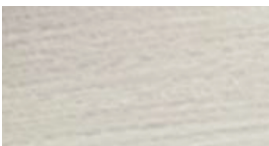


FINTA PELLE



FLUTED FINTA PELLE

## TIMBER (CABINETS)



BRUSHED OAK CREAM



TUSCAN OAK

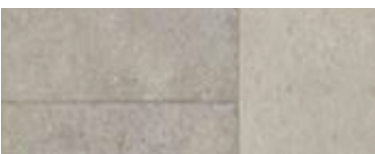


LARIX



BRUSHED OAK GREY

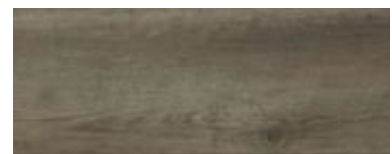
## FLOOR



VICTORIA LIGHT



CAJOU HONEY



CAJOU GREY

# WHAT OUR CLIENTS SAY



**A close friend of mine owned a SunCamper for over 20 years and absolutely loved it, so I decided to rent one to drive to Cape York. It was an excellent trip with the vehicle performing faultlessly, and as a result I bought my own SunCamper a number of years ago.**

I've since completed the around Australia circuit – including the Gibb River Road and the Savannah Way via Borroloola – plus trips to the Snowy Mountains and on 4WD tracks in the Blue Mountains. Many of the places I've been to required four-wheel drive – even low range – and the SunCamper has taken me to locations where towing a caravan would have been impossible. The vehicle drives like any Toyota Hilux, with the accommodation that you are taking with you barely being noticeable. I fitted the unit with a satellite TV dish, so it is just like home wherever we are camped. I thoroughly recommend the SunCamper – especially because it is Australian made.

**DICK SMITH - Australian Icon**  
Sherwood 4x4 Owner



**One of the best decisions I have ever made. I love my SunCamper.**

I fell for her instantly at the Brisbane Expo. I hadn't realized what I wanted until I saw her - spacious, airy, and always catching a breeze. The after-service is exceptional.

I recently tackled the Three Corners in my Hilux with limited 4WD experience. I worried about the rough terrain, but the Hilux's reliability, combined with SunCamper's craftsmanship, made the trip effortless. Despite rough roads, everything held up perfectly.

At night, there's nothing better than climbing into bed with the hatch open, feeling the breeze, and gazing at the stars - until I fall asleep and miss them.

**FELICITY NUTTING - Brisbane**  
Sherwood 4x4 Owner



**MAREE GEAR - Sydney**

Shewood Conqueror 4x4  
Owner

**SunCamper Conqueror owner since May 2024 EXTREMELY happy, after an extensive search I chose local family-owned company with long industry exposure.**

Camper has exceeded my expectations internal layout works so well has ease of access to everything plenty of storage rear seating makes it feel light and roomy plus drives like it's just a Ute haven't felt any impact of the external body. My first major trip was Central Coast NSW to Birdsville BRB didn't miss a beat which is reassuring as a solo female traveller handled the dirt from Windorah to Birdsville with ease. Draws comments and praise wherever it goes.

1/3

**OF OUR SALES ARE TO SOLO FEMALE ADVENTURERS**



**YOUR CLOSEST DEALER IS:**

## **CONTACT US**

**T. 1300 416 854**

**E. [sales@suncampermotorhomes.com.au](mailto:sales@suncampermotorhomes.com.au)**

### **Visit Us**

9 Sefton Road  
Thornleigh NSW 2120

**MD19015**

A division of Suncamper Pty Ltd



**[WWW.SUNCAMPERMOTORHOMES.COM.AU](http://WWW.SUNCAMPERMOTORHOMES.COM.AU)**